

NEW



DAILY²-LINE





DAILY²-LINE

The DAILY² line is most suited to use in various shoe types with low space requirements. DAILY², DAILY² COMFORT+, DAILY² FLEX, DAILY² BLACK FIBER, DAILY² HIGH HEEL, DAILY² CONTROL and DAILY² RIGIDUS SE/LE are your ideal everyday companions. Designed as an extremely thin and lightweight insole, the DAILY² line gives you the opportunity to offer your customers foot orthotics which are high quality and fit inside business shoes. There are two shell widths available, narrow and medium. The DAILY² line's centrepiece is the orthotic shell made from glass fiber and carbon fiber composite material Perpedes developed and produces by itself. Due to their thermoplastic properties, these are able to adapt to the foot simply and quickly. High-quality materials which meet high demands and offer the opportunity to be quickly and easily processed.

DAILY²



The DAILY² orthotic blank forms the basis of the DAILY line. The self-supporting but thin Perpedes glass fiber composite shell with its shell recess under the tuberosity 5th metatarsal and long wing section optimally supports the foot's longitudinal arch, guides the heel and still maintains the natural feeling when walking. The Perpedes glass fiber composite shell, which is available in two widths,

can be optionally shaped due to its thermoplastic properties and can, therefore, be uniquely adapted to the user's foot and conditions. An additional reinforcing textile layer gives the orthotic blank further stability in the forefoot area. Optionally, the DAILY² can be supplemented by soft Carbosan foam met pads which support the transversal arch.

CHARACTERISTICS

- Supportive foot orthotic blank
- Long-sole soft cushion (optional)



Compatible with the
BALANCER - HEEL POST MODUL

PRODUCT FACTS

Size range:	35 - 48, 49/50 - 51/52
Width:	Narrow (35 - 44) / Medium (35 - 52)
Foot orthotic shell:	Acrylic composite material made of knitted glass fiber (G431)
Outline:	Business Karree
3D-Contour:	DA = moderate longitudinal arch support with slightly guided heel
Special feature:	Long rear wings

DELIVERY FORM



[To the product video](#)

BESTSELLERS DAILY²

ITEM NO. OLD	ITEM NO. NEW	BASE COVER	ADDITION	WIDTH	LENGTH	SIZE RANGE
DAA_	DAAA_	CarboTec black	-	Narrow	4/4	35 - 44
DAL_	DAAL_	CarboTec titanium	-	Medium	4/4	35 - 52
DAG_	DAAG_	CarboTec black	COMFORT soft zone padding	Narrow	4/4	35 - 44
DAM_	DAAM_	CarboTec titanium	COMFORT soft zone padding	Medium	4/4	35 - 52

DAILY²

BASE/BOTTOM COVER

CarboTec, black (narrow width)
CarboTec, titanium (medium width)

MATERIAL COMPOSITION

50% PUR + 50% PA

CHARACTERISTICS

- High abrasion resistance
- Slightly slip-resistant
- Colorfast and lightfast

FOOT ORTHOTIC SHELL

Acrylic composite material made of knitted glass fiber (G431)

CHARACTERISTICS

- Very good thermalplastic processing at approx. 140° C
- Optimal support of the foot's longitudinal arch

FEATURE

Shell recess under the tuberosity 5th metatarsal and central heel

LONG REAR WINGS

Stabilized heel by long rear wings.





REINFORCING LAYERS

Additional reinforcing layers provide smooth transitions and dimensional stability for the orthotic blank.

DAILY² FLEX



The DAILY² FLEX orthotic blank distinguishes itself by the dynamic, flexible heel. The extremely thin and self-supporting Perpedes glass fiber composite shell with its shell recess under the tuberosity 5th metatarsal and short wing section dynamically supports the foot's longitudinal arch and can be worn in shoes with slightly raised heels due to the flexible heel area. The glass fiber compo-

site shell, which is available in two widths, can be optionally shaped due to its thermoplastic properties and can, therefore, be uniquely adapted to the user's foot and requirements. An additional reinforcing textile layer gives the orthotic blank further stability in the forefoot area. Optionally, the DAILY² FLEX can be supplemented by soft Carbosan foam met pads which support the transversal arch.

CHARACTERISTICS

- Supportive foot orthotic blank
- Long-sole soft cushion (optional)



Compatible with the
BALANC

PRODUCT FACTS

Size range:	35 - 48, 49/50 - 51/52
Width:	Narrow (35 - 44) / Medium (35 - 52)
Foot orthotic shell:	Acrylic composite material made of woven glass fiber and knitted polyamide (GH701)
Outline:	Business Karree
3D-Contour:	DA = moderate longitudinal arch support with slightly guided heel
Special feature:	Short rear wings

DELIVERY FORM



BESTSELLERS DAILY² FLEX

ITEM NO. OLD	ITEM NO. NEW	BASE COVER	ADDITION	WIDTH	LENGTH	SIZE RANGE
DFG_	DAFG_	Carbotec black	-	Narrow	3/4	35 - 44
DFD_	DAFD_	CarboTec titanium	-	Medium	3/4	35 - 52
DFH_	DAFH_	Carbotec black	COMFORT soft zone padding	Narrow	4/4	35 - 44
DFF_	DAFF_	Carbotec titanium	COMFORT soft zone padding	Medium	4/4	35 - 52

DAILY² FLEX

BASE/BOTTOM COVER

CarboTec, black (narrow width)
CarboTec, titanium (medium width)

MATERIAL COMPOSITION
50% PUR + 50% PA

CHARACTERISTICS

- High abrasion resistance
- Slightly slip-resistant
- Colorfast and lightfast

FOOT ORTHOTIC SHELL

Acrylic composite material made of woven glass fiber and knitted polyamide (GH701)

CHARACTERISTICS

- Very good thermalplastic processing at approx. 140° C
- Optimal support of the foot's longitudinal arch

FEATURE

Shell recess under the tuberosity 5th metatarsal and central heel

LONG REAR WINGS

Flexible heel by short rear wings, for improved feeling of natural gait pattern.





REINFORCING LAYERS

Additional reinforcing layers provide smooth transitions and dimensional stability for the orthotic blank.

DAILY² BLACK FIBER



The DAILY² BLACK FIBER orthotic blank distinguishes itself by the use of Perpedes black glass fiber composite material which is visible through a recess in the underside. The self-supporting but thin glass fiber shell with its shell recess under the tuberosity 5th metatarsal and short wing section dynamically supports the foot's longitudinal arch. The orthotic shell, which is available

in two widths, can be optionally shaped due to its thermoplastic properties and can, therefore, be uniquely adapted to the user's foot and requirements. Optionally, the DAILY² BLACK FIBER can be supplemented by soft Carbosan foam met pads which support the transversal arch.

CHARACTERISTICS

- Supportive foot orthotic blank
- Long-sole soft cushion (optional)



Compatible with the
BALANCER - HEEL POST MODUL

PRODUCT FACTS

Size range:	35 - 48
Width:	Narrow (35 - 44) / Medium (35 - 52)
Foot orthotic shell:	Acrylic composite material made of knitted glass fiber and knitted polyamide (BF7001)
Outline:	Business
3D-Contour:	DA = moderate longitudinal arch support with slightly guided heel
Special feature:	Short rear wings

DELIVERY FORM



BESTSELLERS

ITEM NO. OLD	ITEM NO. NEW	BASE COVER	ADDITION	WIDTH	OUTLINE	LENGTH	SIZE RANGE
DBB_	DABB_	PUR black	-	Narrow	Business	4/4	35 - 44
DBD_	DABD_	PUR black	-	Medium	Business	4/4	35 - 52
DBF_	DABF_	PUR black	COMFORT soft zone padding	Narrow	Business	4/4	35 - 44
DBJ_	DABJ_	PUR black	COMFORT soft zone padding	Medium	Business	4/4	35 - 52

DAILY² BLACK FIBER

BASE/BOTTOM COVER

PUR, black, 0.7 mm

MATERIAL COMPOSITION

100% TPU

CHARACTERISTICS

- High abrasion resistance
- Good durability

FOOT ORTHOTIC SHELL

MATERIAL COMPOSITION

Acrylic composite material made of knitted glass fiber and knitted polyamide (BF7001)

CHARACTERISTICS

- Good thermalplastic processing at approx. 140° C
- Optimal support of the foot's longitudinal arch

FEATURE

Shell recess under the tuberosity 5th metatarsal and central heel

SHORT REAR WINGS

Flexible heel by short rear wings, to sustain a natural feeling for ground contact.





REINFORCING LAYERS

Additional reinforcing layers provide smooth transitions and dimensional stability for the orthotic blank.

DAILY² COMFORT+



After further processing by orthopedic technicians the DAILY² COMFORT+ orthotic blank is ideally suited to counteract complaints in the forefoot and heel area, e.g. due to being on your feet and standing or walking longer distances. The self-supporting but thin Perpedes glass fiber composite shell with its shell recess under the tuberosity 5th metatarsal and long wing section optimally supports the foot's longitudinal arch, guides and stabilizes the heel and still maintains the natural feeling when walking. The

glass fiber composite shell, which is available in two widths, can be optionally shaped due to its thermoplastic properties and can, therefore, be uniquely adapted to the user's foot and requirements. Additional cushioning in the central forefoot and heel areas made from high-quality Shock Absorber X PUR foam reduces the painful sensation of pressure and, therefore, increases wearing comfort. Optionally, the DAILY² COMFORT+ can be supplemented by soft Carbosan foam met pads which support the transversal arch.

CHARACTERISTICS

- Supportive foot orthotic blank
- Forefoot soft cushion



Compatible with the
BALANCER - HEEL POST MODUL

PRODUCT FACTS

Size range:	35 - 48
Width:	Narrow (35 - 44) / Medium (35 - 52)
Foot orthotic shell:	Acrylic composite material made of knitted glass fiber (G431)
Outline:	Square
3D-Contour:	DA = moderate longitudinal arch support with slightly guided heel
Special feature:	Forefoot and heel cushion pads made from Shock Absorber X PUR material Long rear wings

DELIVERY FORM



[To the product video](#)

BESTSELLERS DAILY² COMFORT+

ITEM NO. OLD	ITEM NO. NEW	BASE COVER	ADDITION	WIDTH	LENGTH	SIZE RANGE
DCE_	DACE_	CarboTec black	-	Narrow	4/4	35 - 44
DCD_	DACD_	CarboTec titanium	-	Medium	4/4	35 - 52

DAILY² COMFORT+

BASE/BOTTOM COVER

CarboTec, black (narrow width)
CarboTec, titanium (medium width)

MATERIAL COMPOSITION
50% PUR + 50% PA

CHARACTERISTICS

- High abrasion resistance
- Slightly slip-resistant
- Colorfast and lightfast

FOOT ORTHOTIC SHELL

Acrylic composite material made of knitted glass fiber and knitted polyamide (BF7001)

CHARACTERISTICS

- Good thermalplastic processing at approx. 140° C
- Optimal support of the foot's longitudinal arch

FEATURE

Shell recess under the tuberosity 5th metatarsal and central heel

LONG REAR WINGS

Stabilized heel by long rear wings.





REINFORCING LAYERS

Additional reinforcing layers provide smooth transitions and dimensional stability for the orthotic blank.

FOREFOOT CUSHION PAD

Forefoot cushion pad made of yellow 7° Shore A Shock Absorber X (PUR) to relief from pressure.

HEEL CUSHION PAD

Heel cushion pad made of yellow 7° Shore A Shock Absorber X (PUR).

DAILY² RIGIDUS SE



After further processing by orthopedic technicians the DAILY² RIGIDUS SE orthotic blank is ideally suited for complaints in the big toe area, e.g. Hallux limitus. The self-supporting but thin Perpedes glass fiber composite shell with its shell recess under the tuberosity 5th metatarsal and short wing section dynamically supports the foot's longitudinal arch and is extended under the MTP joint 1 in such a way that the joint is spared from painful movement-related deflections whilst walking. In addition, the shell's frontal/lateral outline is lengthened, too. This ensures

a plane forefoot posture and prevents supination with all the related side effects to the knee joint. The shell's short wing heel section ensures a feeling of natural gait pattern. The glass fiber composite shell, which is available in two widths, can be optionally shaped due to its thermoplastic properties and can, therefore, be uniquely adapted to the user's foot and requirements. Additionally, the DAILY² RIGIDUS SE can be supplemented by soft Carbosan foam met pads which support the transversal arch.

CHARACTERISTICS

- Supportive foot orthotic blank
- Rigidus splint
- Long-soled soft cushion (optional)



Compatible with the
BALANCER - HEEL POST MODUL

PRODUCT FACTS

Size range:	35 - 48
Width:	Narrow (35 - 44) / Medium (35 - 52)
Foot orthotic shell:	Acrylic composite material made of woven glass fiber and knitted polyamide (GH702)
Outline:	Business, Square
3D-Contour:	DR = moderate longitudinal arch support with guided heel
Special feature:	Short rear wings

DELIVERY FORM



[To the product video](#)

BESTSELLERS DAILY² RIGIDUS SE

ITEM NO. OLD	ITEM NO. NEW	BASE COVER	ADDITION	WIDTH	OUTLINE	LENGTH	SIZE RANGE
DRQ_	DARQ_	CarboTec black	-	Narrow	Business	4/4	35 - 44
DRS_	DARS_	CarboTec titanium	-	Medium	Business	4/4	35 - 52
DRR_	DARR_	CarboTec black	COMFORT soft zone padding	Narrow	Business	4/4	35 - 44
DRT_	DART_	CarboTec titanium	COMFORT soft zone padding	Medium	Business	4/4	35 - 52

DAILY² RIGIDUS SE

BASE/BOTTOM COVER

CarboTec, black (narrow width)
CarboTec, titanium (medium width)

MATERIAL COMPOSITION

50% PUR + 50% PA

CHARACTERISTICS

- High abrasion resistance
- Slightly slip-resistant
- Colorfast and lightfast

RIGIDUS SPLINT

Rigidus splint for motion-limiting reinforcement underneath the MTP-joint I

FOOT ORTHOTIC SHELL

Acrylic composite material made of woven glass fiber and knitted polyamide (GH701)

CHARACTERISTICS

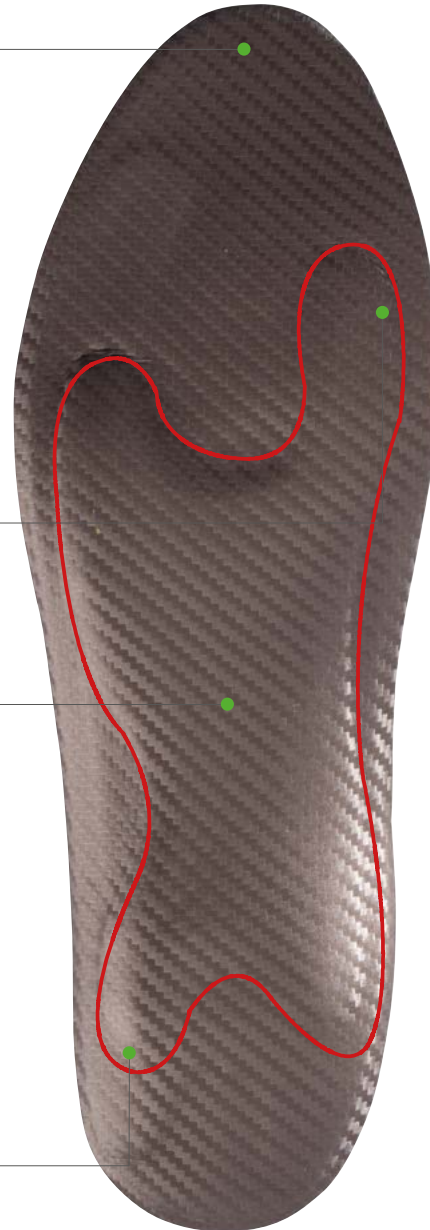
- Very good thermalplastic processing at approx. 140° C
- Optimal support of the foot's longitudinal arch

FEATURE

Shell recess under the tuberosity 5th metatarsal and central heel

SHORT REAR WINGS

Flexible heel by short rear wings, to sustain a natural feeling for ground contact.





PROTRACTED FRONTAL/LATERAL SHELL OUTLINE

The shell's lengthened frontal/lateral outline ensures a plane forefoot posture and prevents supination with all the related negative effects to the knee joint.

REINFORCING LAYERS

Additional reinforcing layers provide smooth transitions and dimensional stability for the orthotic blank.

DAILY² RIGIDUS LE



After further processing by orthopedic technicians the DAILY² RIGIDUS LE orthotic blank is ideally suited for more severe complaints in the big toe area, e.g. Hallux limitus/rigidus. The self-supporting but thin Perpedes glass fiber composite shell with its short wing section dynamically supports the foot's longitudinal arch. It is further extended under the MTP joint 1, the Hallux' DIP joint as well as the distal phalanx in such a way, that all mentioned joints are spared from the often painful movement-related deflections

whilst walking. In addition, the shell's frontal/lateral outline is lengthened, too. This ensures a plane forefoot posture and prevents supination with all the related side effects to the knee joint. The glass fiber composite shell, which is available in two widths, can be optionally shaped due to its thermoplastic properties and can, therefore, be uniquely adapted to the user's foot and conditions. Additionally, the DAILY² RIGIDUS LE can be supplemented by soft Carbosan foam met pads which support the transversal arch.

CHARACTERISTICS

- Supportive foot orthotic blank
- Rigidus splint
- Long-soled soft cushion (optional)



Compatible with the
BALANCER - HEEL POST MODUL

PRODUCT FACTS

Size range:	35 - 52
Width:	Narrow (35 - 44) / Medium (35 - 52)
Foot orthotic shell:	Acrylic composite material made of woven glass fiber and knitted polyamide (GH702)
Outline:	Business, Square, Natural outline
3D-Contour:	DR = moderate longitudinal arch support with guided heel
Special feature:	Long rigidus extension and laterally protracted shell for a plane forefoot posture Short rear wings

DELIVERY FORM



BESTSELLERS DAILY² RIGIDUS LE

ITEM NO. OLD	ITEM NO. NEW	BASE COVER	ADDITION	WIDTH	OUTLINE	LENGTH	SIZE RANGE
DRO_	DARO_	CarboTec black	-	Narrow	Business	4/4	35 - 44
DRL_	DARL_	CarboTec titanium	-	Medium	Business	4/4	35 - 52
DRP_	DARP_	CarboTec black	COMFORT soft zone padding	Narrow	Business	4/4	35 - 44
DRM_	DARM_	CarboTec titanium	COMFORT soft zone padding	Medium	Business	4/4	35 - 52

DAILY² RIGIDUS LE

BASE/BOTTOM COVER

CarboTec, black (narrow width)
CarboTec, titanium (medium width)

MATERIAL COMPOSITION
50% PUR + 50% PA

CHARACTERISTICS

- High abrasion resistance
- Slightly slip-resistant
- Colorfast and lightfast

LONG RIGIDUS SPLINT

Long rigidus extension is extended under the MTP joint 1, the Hallux' DIP joint as well as the distal phalanx in such a way, that these joints are spared from the often painful movement-related deflections whilst walking.

FOOT ORTHOTIC SHELL

Acrylic composite material made of woven glass fiber and knitted polyamide (GH701)

CHARACTERISTICS

- Very good thermalplastic processing at approx. 140° C
- Optimal support of the foot's longitudinal arch

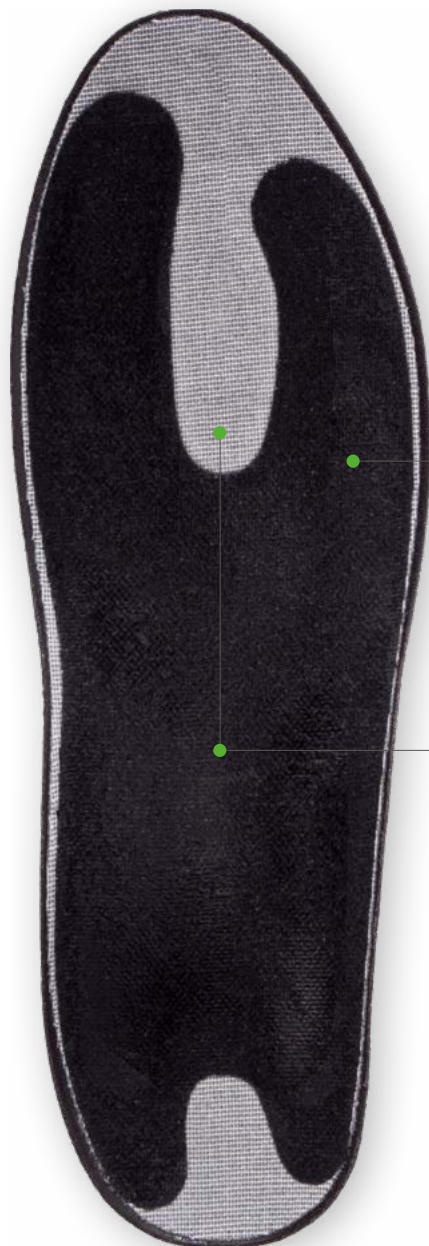
FEATURE

Shell recess under the tuberosity 5th metatarsal and central heel

SHORT REAR WINGS

Flexible heel by short rear wings, to sustain a natural feeling for ground contact.





PROTRACTED FRONTAL/LATERAL SHELL OUTLINE

The shell's lengthened frontal/lateral outline ensures a plane forefoot posture and prevents supination with all the related negative effects to the knee joint.

REINFORCING LAYERS

Additional reinforcing layers provide smooth transitions and dimensional stability for the orthotic blank.

DAILY² HIGH HEEL



After further processing by orthopedic technicians the DAILY² HIGH HEEL orthotic blank is ideally suited for use in high heeled shoes. The thin, self-supporting and highly flexible Perpedes carbon fiber composite shell with its shell recess under the tuberosity 5th metatarsal short wing section adapts optimally to the relevant shoe's heel spring. The carbon fiber shell can be optionally shaped due to its thermoplastic properties and can, therefore, be unique-

ly adapted to the user's foot and requirements. Additionally, soft Carbosan forefoot and heel pads are inserted in order to reduce the specific impact sensation when wearing higher heels. Optionally, the DAILY² HIGH HEEL can be supplemented by soft Carbosan foam met pads which support the transversal arch and and is optionally available without the soft forefoot cushion pad.

CHARACTERISTICS

- Supportive foot orthotic blank
- Long-sole soft cushion (optional)



Compatible with the
BALANCER - HEEL POST MODUL

PRODUCT FACTS

Size range:	36 - 44
Width:	Narrow
Foot orthotic shell:	Acrylic composite material made of knitted carbon fiber (C601)
Outline:	Business
3D-Contour:	DH = moderate longitudinal arch support, flat heel
Special feature:	Heel cushion pad made from CarboSan foam Short rear wings

DELIVERY FORM



[To the product video](#)

BESTSELLERS

ITEM NO. OLD	ITEM NO. NEW	BASE COVER	ADDITION	WIDTH	OUTLINE	LENGTH	SIZE RANGE
DHB_	DAHb_	CarboTec black	-	Narrow	Business	4/4	36 - 44
DHC_	DAHC_	CarboTec black	COMFORT soft zone padding	Narrow	Business	4/4	36 - 44
	DAHE_	CarboTec black	COMFORT forefoot and heel soft zone padding	Narrow	Business	4/4	36 - 44

DAILY² HIGH HEEL

BASE/BOTTOM COVER

CarboTec, black

MATERIAL COMPOSITION

50% PUR + 50% PA

CHARACTERISTICS

- High abrasion resistance
- Slightly slip-resistant
- Colorfast and lightfast

FOOT ORTHOTIC SHELL

Acrylic composite material made of knitted carbon fiber (C601)

CHARACTERISTICS

- Excellent thermalplastic processing at approx. 140° C
- Optimal support of the foot's longitudinal arch

FEATURE

Shell recess under the tuberosity 5th metatarsal and central heel

SUPINATION WEDGE

By using an additional layer made from carbon fiber material (C901), the foot's arch is supported and therefore counteracts problems due to overpronation.

SHORT REAR WINGS

Flexible heel by short rear wings, to sustain a natural feeling for ground contact.





FOREFOOT CUSHION PAD

Forefoot cushion pad made of Carbosan foam to relief from pressure.

REINFORCING LAYERS

Additional reinforcing layers provide smooth transitions and dimensional stability for the orthotic blank.

HEEL CUSHION PAD

Heel cushion pad made of Carbosan foam to soften impact forces.

DAILY² CONTROL



After further processing by orthopedic technicians the DAILY² CONTROL orthotic blank is ideally suited for feet with an increased lateral guiding requirement. The self-supporting but thin Perpedes glass fiber composite shell with its shell recess under the tuberosity 5th metatarsal and long wing section optimally supports the foot's longitudinal arch, guides the heel when walking. For optimized rear foot guidance, the DAILY CONTROL heel is cupped and,

for improved fit, it is lowered at the back. The glass fiber composite shell can be optionally shaped due to its thermoplastic properties and can, therefore, be uniquely adapted to the user's foot and requirements. An additional reinforcing textile layer gives the orthotic blank further stability in the forefoot area. Optionally, the DAILY² CONTROL can be supplemented by soft Carbosan foam met pads which support the transversal arch.

CHARACTERISTICS

- Heel cupped blank, solid, (thermal) remoldable
- Long-soled soft cushion (optional)

PRODUCT FACTS

Size range:	36 - 48
Width:	Medium
Foot orthotic shell:	Acrylic composite material made of knitted glass fiber (G431)
Outline:	Business Square
3D-Contour:	DC = moderate longitudinal arch support, slight heel cup
Special feature:	Cupped hindfoot Long rear wings

DELIVERY FORM



BESTSELLERS

ITEM NO. OLD	ITEM NO. NEW	BASE COVER	ADDITION	WIDTH	OUTLINE	LENGTH	SIZE RANGE
DCB_	DACB_	CarboTec black	-	Medium	Business	4/4	36 -48
DCC_	DACC_	CarboTec black	COMFORT soft zone padding	Medium	Business	4/4	36 -48

DAILY² CONTROL

BASE/BOTTOM COVER

CarboTec, titan

MATERIAL COMPOSITION

50% PUR + 50% PA

CHARACTERISTICS

- High abrasion resistance
- Slightly slip-resistant
- Colorfast and lightfast

FOOT ORTHOTIC SHELL

Acrylic composite material made of knitted (G431)

CHARACTERISTICS

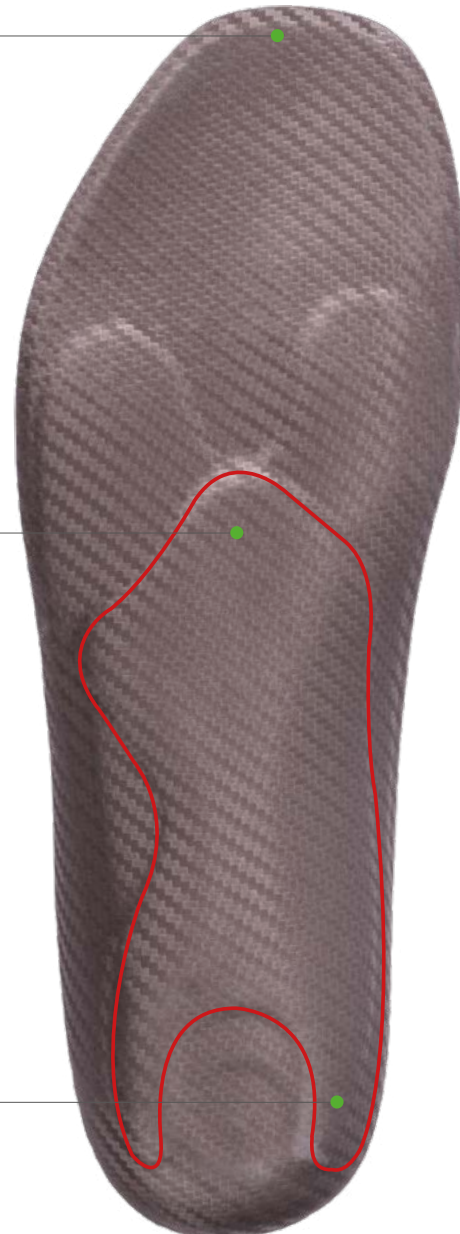
- Very good thermalplastic processing at approx. 140° C
- Optimal support of the foot's longitudinal arch

FEATURE

Shell recess under the tuberosity 5th metatarsal and central heel

LONG REAR WINGS

Stabilized heel by long rear wings.





REINFORCING LAYERS

Additional reinforcing layers provide smooth transitions and dimensional stability for the orthotic blank.

CUPPED HEEL

For optimized rear foot guidance the heel is cupped and, for improved fit, it is lowered at the back. Due to the wide heel cup, top covers of our DryFeet+ are suitable.

DAILY² COMFORT SOFT ZONE PADDING

DAILY² COMFORT SOFT ZONE PADDING

Soft pressure zone padding made of Carbosan foam suitable for the limited volume of business footwear

DAILY² COMFORT PADDING

Available for the following foot orthoses of the Daily line:

DAILY²
DAILY² FLEX
DAILY² BLACK FIBER
DAILY² CONTROL
DAILY² RIGIDUS SE/LE





"INVISIBLE" CUSHION

Thinning and therefore invisible at the sides

TOPOLOGY

Various thicknesses - more cushion thickness in the center according to the foot's needs

OVERVIEW

	DAILY ²	DAILY ² FLEX
Foot orthotic shell made of composite glass fiber material	G431	GH701
Foot orthotic shell made of composite carbon fiber material		
Base/Bottom cover CarboTec titanium	✓	✓
Base/Bottom cover CarboTec black	✓	✓
Base/Bottom cover PUR black		
Supination wedge made of composite carbon fiber material (C901)		
Rigidus splint (short) for limitation of MTP-joint I		
Rigidus splint (long) for limitation of MTP-joint I, Hallux' DIP joint as well as its distal phalanx		
Protracted frontal/lateral shell outline for plane forefoot posture		
Forefoot and heel cushion pad		
COMFORT soft zone padding (selected item numbers)	✓	✓
Shell recess under the tuberosity 5th metatarsal and central heel	✓	✓
Long rear wings	✓	
Short rear wings		✓
Cupped heel		
Orthotic shell customizable by temperature of approx. 140°C (284°F)	✓	✓

DAILY ² BLACK FIBER	DAILY ² COMFORT+	DAILY ² RIGIDUS SE	DAILY ² RIGIDUS LE	DAILY ² HIGH HEEL	DAILY ² CONTROL
BF7001	G431	GH702	GH702		G421
				C601	
	✓	✓	✓		✓
	✓	✓	✓	✓	
✓					
				✓	
		✓			
			✓		
		✓	✓		
	✓			✓	
✓		✓	✓		✓
✓	✓	✓	✓	✓	✓
	✓				✓
✓		✓	✓	✓	
					✓
✓	✓	✓	✓	✓	✓



WWW.PERPEDES.DE

Order and Support:

Mo. - Th: 8.00 am - 5.30 pm

Fr. 8.00 am - 4.00 pm

T. +49 (0) 7021 738 30 - 0

F. +49 (0) 7021 738 30 - 298

info@perpedes.de

Return address:

Perpedes GmbH

Tannenbergstr. 139

73230 Kirchheim unter Teck

Germany

Perpedes GmbH

Haertwasen 8-14

73252 Lenningen

Germany